

THULE[®]
SWEDEN

› **Bring your passion.
We'll bring the rest.**

2015

Bring your life
thule.com



Racks	6	Water	62
Technology and features	8	Technology and features	64
Load bars	10	Water sport carriers	66
Load carrier feet	15	Technical specifications	68
Thule Professional	16		
		Winter	70
Cargo	18	Technology and features	72
Technology and features	20	Winter sport carriers	74
Roof boxes	22	Snow chains	76
Foldable roof boxes	30	Technical specifications	79
Carrier baskets	32		
Rear mounted cargo	34	More product information on	
Technical specifications	36	www.thule.com	
Bike	38		
Technology and features	40		
Roof mounted carriers	42		
Rear door mounted carriers	46		
Tow bar mounted carriers	50		
Bike travel cases	57		
Technical specifications	60		





**> Bring your board.
Bring your bike.
Bring your skis.
Bring your love.
Bring your dreams.
Bring your life.**

Whatever your passion, whatever your pursuit.
Wherever you're going, whatever you're bringing.
We'll help you get it there. Safely, easily and in style.





THULE CREW

At Thule we have always collaborated with some of the best athletes in the world to develop and test our new products. From ski-rack input from Ingemar Stenmark in the 70's and Windsurfing carrier ideas from Robby Naish in the 80's to the collaboration with our current Thule Crew team. These chosen athletes are all individuals who love to perform at levels way above normal, but are also people who care about the community and the environment in which they live out their passions. One member has the record for the largest wave ever surfed. Another has performed the first ski base jump off the Matterhorn mountain. A third is one of the greatest alpine skiers of all time. Our products are in their hands for the toughest tests in the World.

The world of Thule

Take a look at the world of Thule. Our wide range of products, Buyer's Guide, dealer locator and more useful information are available at our website. You can also visit us at Facebook or be inspired at our Youtube channel.

www.thule.com
www.facebook.com/thulebringyourlife
www.youtube.com/thulebringyourlife



Members of Thule Crew



Aline Bock.
Former freeriding snowboard world champion and a true sports role model.



Chris Van Dine.
Biking. Famous adventurer and gravity star.



Matt Elsasser.
Super talented strapless kite-surfer and winner of Go Epic with Thule 2013.



Matthias Giraud.
Skiing/BASE jumping. Performed the first ski base jump off the Matterhorn.



Garrett McNamara.
Surfing/SUP. Record holder for largest wave ever surfed.



Yoshitaku Nagasako.
Biking. Famous and spectacular BMX rider.



Sherpas Cinema.
No one can capture the beauty of an active life like they can.



Eva Nyström.
Triathlon. World Champion, long distance duathlon 2013.



Pedro Olivia.
Kayaker who has performed the highest waterfall drop ever - 38 metres.



Flo Orley.
Snowboarding. #1 Freeride World Qualifier Overall Ranking 2013.



Jenny Rissveds.
Cycling. Gold medal winner at the European Championships 2013.



Martin Söderström.
Passionate and inspiring freeriding mountain biker with his own race.



Lindsey Vonn.
Alpine ski racer. World champion and Olympic gold medalist.



Thule Adventure Team.
Multisport. Adventure Racing World Champions 2011 & 2013.



➤ Racks







› The fastest way out there.

The number of family members, like the number of outdoor activities, tend to increase with time – and space in the car is reduced accordingly. One way to make room for more adventure is to load things on your car roof.

Start by choosing a rack that suits your needs. A Thule roof rack is the strong foundation for every load, and you can easily mount accessories for different purposes. Just a few simple operations and you're on your way.





FEATURES

- ❶ The innovative Thule SlideBar makes loading heavy items simple. And because it slides out beside the car body, it protects your car from damage and you from getting dirty.
- ❷ Thule WingBar Edge offers a universal fit thanks to the use of telescopic feet, that are adjustable with up to 50 mm/side.
- ❸ In most Thule rack systems all tools are integrated, so there's no risk of leaving them at home.
- ❹ For T-track owners, this provides an elegant alternative to tightening anything around the bar.
- ❺ Avoid the hassle with many different keys, upgrade to Thule One-Key System and get one key for all Thule products. Available in sets of 4, 6, 8 and 12 locks. Check www.thule.com for more information.



› 1: What is your need?

Everyday, sometimes or just now and then? Heavy or light gear? We have a rack for all purposes.



Thule WingBar Edge

If your need of loading gear on your car varies from time to time, but you wish that possibilities will always be there, Thule WingBar Edge offers the ultimate solution. The extra low profile and close fit to the roof makes your car look even better, even when not in use. At the same time, Thule WingBar Edge is safe and basically noiseless.

MORE INFO, SEE PAGE 12.



Thule WingBar

Want to use your bar often and leave it mounted on your car when not in use? The lightweight aluminium Thule WingBar might be the perfect choice. The loading capacity is higher, and still the bar is basically noiseless. Its T-track allows you to use the full width of the bar and easily fit load accessories.

MORE INFO, SEE PAGE 13.



Thule SlideBar

If you're going to transport sports equipment such as kayaks or bikes, if you have a bulky load, or if you have a high car, take a look at the innovative Thule SlideBar. The bar slides out on either side of the car body so you can easily manage your load. Suitable for an active life where loading and unloading are frequent elements.

MORE INFO, SEE PAGE 14.



Thule SquareBar

If you only use your bar once in a while, the standard Thule SquareBar, made of steel and coated in black plastic for a durable finish, might be right for you.



Thule Professional Bar

Craftsmen have special needs, and we have a special bar – the sturdy Thule Professional Bar, with a unique tri-slot design for fitting multiple accessories.

MORE INFO, SEE PAGE 17.

> 2: Your car.

Remember that car roofs don't look the same. Pick the load carrier that fits your car. Thule Buyer's Guide at www.thule.com, or the printed Buyer's Guide available in shops, will help you find the perfect solution to your needs.





New color

Thule WingBar Edge

The most safe and silent roof rack.
Now in low fit.

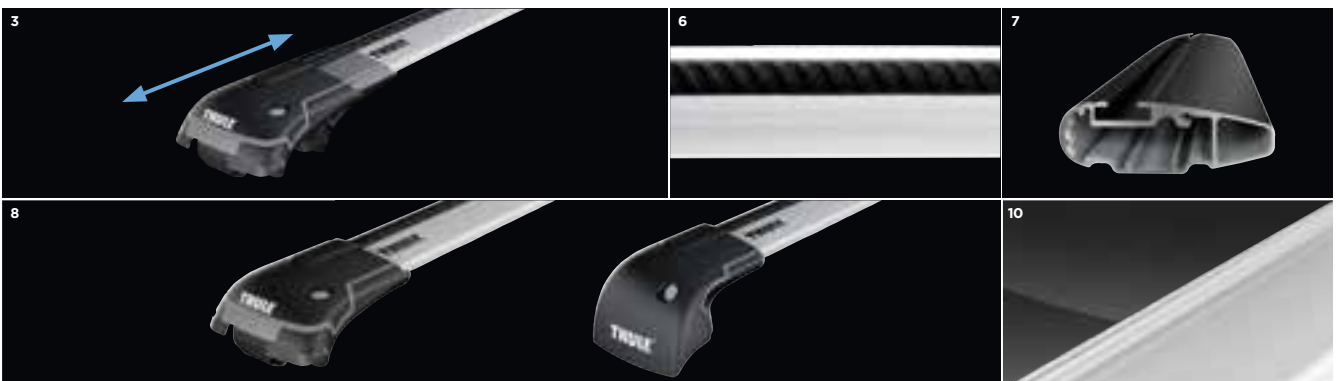
FEATURES

- ❶ Low profile and close fit to the roof creates a stunning look.
- ❷ Smoothly arched for a slim fit.
- ❸ Universal fit by the use of telescopic feet (50 mm/side).
- ❹ Pre-assembled and complete packed for easy handling.
- ❺ Using airplane technology to minimize sound and fuel consumption.
- ❻ WindDiffuser diverts the air currents.
- ❼ Trail Edge for reduced air resistance.
- ❽ Double molded plastic caps for best appearance and easy fitting.
- ❾ City Crash approved for 75 kg according to ISO Norm.
- ❿ Available in silver or in black colour.

Use the Thule Buyer's Guide to find out which roof rack fits your car.



2013





New color

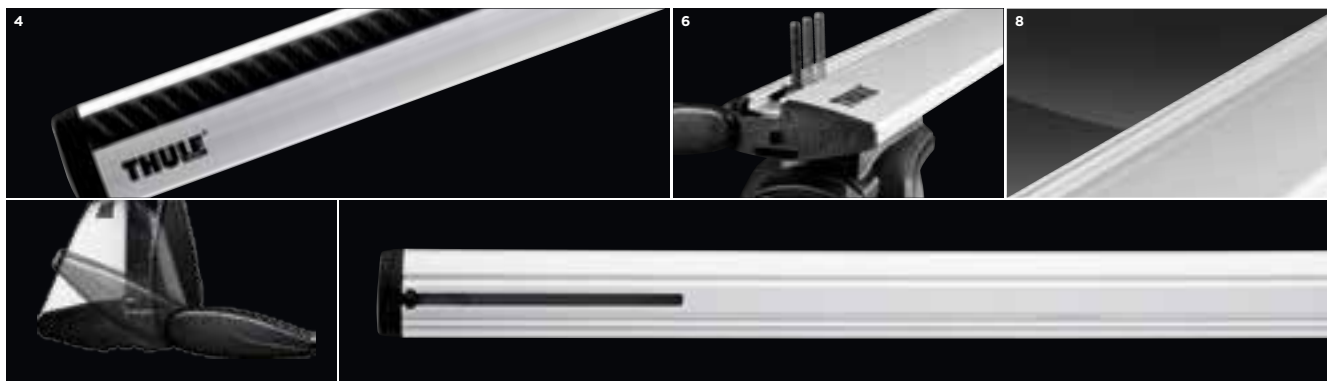
Thule WingBar

The most silent and safe load bar.

FEATURES

- ❶ Using airplane technology to minimize sound and fuel consumption.
- ❷ Smoothly arched for a slim fit.
- ❸ Excellent aerodynamic properties, drag force is reduced with 55% vs. Thule AeroBar.
- ❹ WindDiffuser diverts the air currents.
- ❺ Trail Edge for reduced air resistance.
- ❻ Equipped with T-tracks - an ingenious feature with great benefits. Load accessories are easily slid in place into the track. The full length of the load bar can be used, making more space for attaching several accessories.
- ❼ City Crash approved for 100 kg according to ISO Norm.
- ❽ Available in silver or in black colour.

Use the [Thule Buyer's Guide](#) to find out which roof rack fits your car.





Thule SlideBar

The unique, premium load bar with Bi-directional sliding functionality, for easiest possible loading.

FEATURES

- ❶ Bi-directional sliding (60 cm in each direction), for easiest loading of bulky load on car roof.
- ❷ One-hand release functionality with rubberized grip-panels for most ergonomic user interface.
- ❸ Maxium user security through snap-lock functionality; red-colour indications for open and closed position.
- ❹ Lockable to prevent un-authorized use of the product.
- ❺ Equipped with T-tracks. Load accessories are easily slid in place into the track. The full length of the load bar can be used, making more space for attaching several accessories.
- ❻ City Crash approved for 90 kg according to ISO Norm.

Use the Thule Buyer's Guide to find out which roof rack fits your car.



reddot design award
winner 2011



Load carrier feet

Load carriers



Roof type	Normal roof		Fixpoint/Flush railing	
Name	Thule Rapid System 754	Thule WingBar Edge 959X/959XB	Thule Rapid System 753	Thule Rapid System 751
Description	The most secure and exclusive roof rack for cars without railings or fixation points.	A complete & pre-assembled roof rack with extra close fit to the roof. Designed for cars with pre-installed fixation points or flush railings.	An elegant, universal roof rack foot for cars with pre-installed fixation points or flush railings.	A smart universal roof rack foot for cars with pre-installed fixation points.
Load capacity (kg)¹	75	75	100	100
Foot height (cm)²	9.6	5.9	7.2	10.5
Lock	•	•	•	•
Fits Thule WingBar	•		•	•
Fits Thule SlideBar	•		•	•
Fits Thule AeroBar	•		•	•
Fits Thule SquareBar	•		•	•
Fitting kit needed	•	•	•	•
TÜV approved	•	•	•	•
Fulfils City Crash norms	•	•	•	•

Load carriers



Roof type	Roof rails				Rain gutter
Name	Thule WingBar Edge 958X/958XB	Thule Rapid System 757	Thule Rapid System 775	Thule SmartRack 784/785 794/795	Thule 951/951-2
Description	A complete & pre-assembled roof rack with extra close fit to the roof. Designed for cars with roof rails.	The world's best selling load carrier for cars with normal-sized roof railings.	The universal, elegant railing rack that fits the broadest range of railing dimensions.	A universal, easy to use complete packed railing rack.	A classic roof rack for cars with rain gutters.
Load capacity (kg)¹	75	100	100	75	100
Foot height (cm)²	4.1	7.5	6.5	7.5	15
Lock	•	•	•	Lockable with special tool.	Accessory 527
Fits Thule WingBar		•	•		• (951-2)
Fits Thule SlideBar		•	•		• (951-2)
Fits Thule AeroBar		•	•	• (794/795)	• (951-2)
Fits Thule SquareBar		•	•	• (784/785)	•
Fitting kit needed					
TÜV approved	•	•	•	•	•
Fulfils City Crash norms	•	•	•	•	
Miscellaneous	Complete pack. Fits railing sizes between 25–60 mm	Fits railing sizes between 22–55 mm.	Fits railing sizes between 20–68 mm.	Fits railing sizes between 18–50 mm.	Also available for cars with raised roof, foot packs 952/952-2 and 953/953-1

¹ Maximum load is the maximum approved weight for each type of roof rack. Consult your car manual and the Thule fitting instruction for your car's maximum load limit.

² Foot height is the distance from the base of the foot to the contact surface of the bar.

Please note that:

- For distances to the top of the bar, add 22 mm for Thule SquareBars, 27 mm for Thule AeroBars, 27 mm for Thule WingBars, and 48 mm for Thule SlideBars.
- The car specific fitting kit is excluded in the height measurement.

Load carrier feet are available as 4-packs and load bars as 2-packs.

› Thule Professional





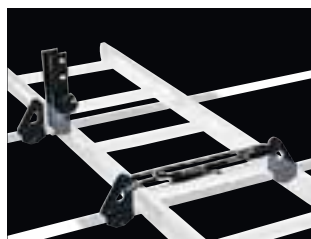
Thule Load Stop 314

Robust and functional load stop that keeps the load firmly in place and prevents it from sliding.



Thule Fold Down Load Stop 315

Unique, patented load stop that simply folds out of the way when loading, unloading or when not in use.



Thule Ladder Carrier 548

For easy and secure loading attaching a ladder to your roof rack. Holds up to three ladders in place.



Thule Ladder Carrier 330

Easy handled ladder carrier with a unique ladder fixing, for quick and easy loading and unloading. Carries up to three section ladders.



Thule Ladder Tilt 311

The ladder carrier that saves your back and your time. Designed with an innovative extender function that tilts down along the side of the vehicle, making loading and unloading remarkably quick, easy and safe.



Thule Conduit Box 3171

Keeps and protects your pipes in the safest possible way. Designed with double lockable openings, making loading, transporting and storage extremely safe.



This is a selection of our durable and time-saving solutions for professional use. Discover all our work solutions at www.thule.com.

Name	Thule Load Stop		Thule Fold Down Load Stop	Thule Ladder Carrier	Thule Ladder Carrier	Thule Ladder Tilt	Thule Conduit Box	Thule Roller
	502/ 503	314	315	548	330	311	3171	334/335
Height (cm)	25/9	15	17				12	
Length (cm)							320	65/110
Lock	Accessory 538	Accessory 538		•			•	
Fits Thule WingBar Edge ¹		•						
Fits Thule WingBar ¹		•						
Fits Thule SlideBar ¹		•			•			
Fits Thule AeroBar ¹		•			•			
Fits Thule SquareBar	•			•			Accessory 346	
Professional bar		•	•		•	•	Accessory 346	•
TÜV approved	•	•		•	•	•	•	•
Miscellaneous	4 movable load-stops.	2 movable load-stops.	2 folding load-stops	Holds up to 3 ladders in place. Includes 3 load-stops.	Holds up to 3 ladders (50 kg). Includes 4 load-stops and a ladder fixation mechanism.	Tiltable. Holds up to 3 ladders (50 kg). Includes 4 load-stops and a ladder fixation mechanism.	Load capacity 50 kg. Pullwire 3181 allows you to separate short and long pipes.	Mounts to the rear track of the Thule Professional bar.

¹ Applies when using Thule's original carrier. Please consult your Thule dealer before using another manufacturer's carrier.

➤ Cargo







› Just as safe as good looking.

As all Thule products, cargo systems are tested for safety that far exceeds international requirements. Safety is a matter of necessity, but it doesn't mean that you have to give up good design. We always keep a close eye on the car industry – especially the latest designs – because we want your roof box to both fit your car and suit it. But at the centre of our thinking is you. Our roof boxes, foldable roof boxes, and other cargo carriers are all extremely user-friendly, easy to attach, and full of useful features. You will benefit more from travelling than ever before.





FEATURES

- ❶ Automatic load fixation: by just closing the box lid, the load will be fixed and secured automatically with the new integrated loading net and crash nose.
- ❷ Exclusive 2-tone colour combination.
- ❸ PowerClick. Patented pre-installed quick mounting system with integrated torque indicator.
- ❹ DualSide. Allows you to open the box from both sides, for easy mounting, loading and unloading.
- ❺ Central locking. Patented safety locking system - the key can only be removed if all locking points are closed.
- ❻ Foldable for easy transport and minimal storage space.

› Roof boxes





Thule Excellence XT

The world's most exclusive roof box.

FEATURES

- 1 Exclusive design with a unique 2-tone colour combination and advanced aerodynamics with diffuser technology to optimize air flow around box.
- 2 Automatic load fixation: by just closing the box lid, the load will be fixated and secured automatically with the new integrated loading net and crash nose.
- 3 Pre-installed PowerClick quick-mount system with integrated torque indicator for fast and secure fitting using one hand only.
- 4 Dual-Side opening with outside lid handles for convenient mounting, loading and unloading.
- 5 Central locking system provides maximum safety. The grip-friendly Thule Comfort key can only be removed if all locking points are securely closed.
- 6 Designed for having a forwarded position on the car roof, enabling full access to the trunk without interference with the roofbox.
- 7 Including Thule Box Light. Automatic on/off function when opening or closing box lid.
- 8 Including a custom-fit lid cover to protect the box from scratches and dust during storage.





Thule Dynamic

The most sporty, aerodynamic and sleek roof box.

FEATURES

- ❶ Sporty, aerodynamically streamlined design with diffuser technology to optimize air flow around the box and a roof-hugging baseline to fit your car roof perfectly.
- ❷ Pre-installed PowerClick quick-mount system with integrated torque indicator for fast and secure fitting using one hand only.
- ❸ DualSide opening with outside lid handles for convenient mounting, loading and unloading.
- ❹ Central locking system provides maximum safety. The grip-friendly Thule Comfort key can only be removed if all locking points are securely closed.
- ❺ Designed for having a forwarded position on the car roof, enabling full access to the trunk without interference with the roofbox.
- ❻ Comes with an integrated base mat with non-slip surface for extra secure loading.



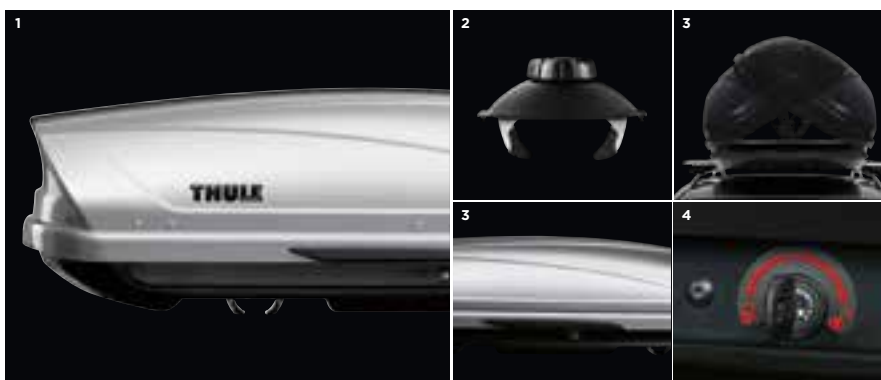
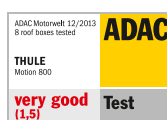


Thule Motion

The most spacious roof box.

FEATURES

- ❶ Optimized design for best space efficiency.
- ❷ Pre-installed PowerClick quick-mount system with integrated torque indicator for fast and secure fitting using one hand only.
- ❸ DualSide opening with outside lid handles for convenient mounting, loading and unloading.
- ❹ Central locking system provides maximum safety. The grip-friendly Thule Comfort key can only be removed if all locking points are securely closed.
- ❺ Designed for having a forwarded position on the car roof, enabling full access to the trunk without interference with the roofbox.





Thule Touring

The functional roof box for all your needs.

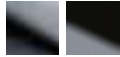
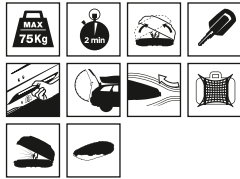
FEATURES

- 1 Available in exclusive black glossy or in extravagant titan aeroskin colour.
- 2 Patented FastClick quick-mount system with integrated torque indicator for simple, secure fixing.
- 3 DualSide opening for convenient mounting, loading and unloading.
- 4 Central locking system provides maximum safety. The grip-friendly Thule Comfort key can only be removed if all locking points are securely closed.



> Sizes and colours.

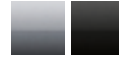
Thule Excellence XT



Thule Dynamic



Thule Motion



Thule Touring



XXL

Thule Motion XXL (900)



235x94x47 cm. 630 l.

XL

Thule Excellence XT



218x94x40 cm. 470 l.

Thule Motion XL (800)



205x84x45 cm. 460 l.

Thule Touring Alpine (700)



232x70x42 cm. 430 l.

L

Thule Dynamic L (900)



235x94x35 cm. 430 l.

Thule Touring L (780)



196x78x43 cm. 420 l.

M

Thule Dynamic M (800)



206x84x34 cm. 320 l.

Thule Motion M (200)



175x86x46 cm. 410 l.

Thule Touring M (200)



175x82x45 cm. 400 l.

S

Thule Touring S (100)



139x90x40cm. 330 l.

Sport

Thule Motion Sport (600)



190x67x42 cm. 320 l.

Thule Touring Sport (600)



190x63x39 cm. 300 l.





Add to your roof box



Thule MultiLift 572

The perfect way to store a roofbox. Works just as perfectly for kayaks and surfboards.

Thule Box Lid Cover 6981/6982/6983

Lid cover to protect the box from scratches and dust during storage. See page 36-37 to find the cover that fits your Thule roof box perfectly.



Thule T-track Adapter

Fits roof box directly into the T-track of the load carrier bar. Check www.thule.com for more information.



Thule One-Key System

Avoid the hassle with many different keys, upgrade to Thule One-Key System and get one key for all Thule products. Available in sets of 4, 6, 8 and 12 locks. Check www.thule.com for more information.





Thule Go Pack Set 8006

Four-pack including three Thule Go Packs 8002 and one Thule Go Pack Nose 8001. Designed to fit your Thule roof box.



Thule Go Box 8005

The two partitions make it a practical organiser in the trunk or in your home, perfect for all kinds of gear. Foldable for easy storage when not in use. Can be folded for one compartment use only. When folded only 30 mm thick. Size 61x34x31 cm.



Thule Go Pack 8002

Protective rubber pads in the corners. Shoulder strap and grips for comfortable handling. Size 61x33x31 cm.



Thule Go Pack Nose 8001

Specially shaped to make use of the tighter space in the front of the roof box. Protective rubber pads in the corners. Shoulder strap and grips for easy and comfortable handling. Size 61x42x28 cm.



Thule Box Ski Carrier Adapter

Want to transport your skis safely and in style? We recommend using the Thule Box Ski Carrier to keep the skis in order inside the box. Just select the right ski carrier for your box model. Available in 5 different sizes. See page 36-37 to find the adapter that fits your Thule roof box perfectly.



Thule Box Light 6951

Make sure to get optimal visibility inside the box with Thule Box light. Special designed LED lamp and customised reflector with automatic on/off function when closing or opening box.

› Foldable roof boxes





Thule Ranger 90.



Thule Ranger 500.



Thule Ranger 90.

Thule Ranger

Foldable roof box for easy storage.

FEATURES

- ❶ Full scale luggage space when used and foldable to require minimal storage space - turns into a small package that fits in boot of the car.
- ❷ Made of waterproof material, with welded seams and a sealed zipper. Keeps dirt and water out and the load protected.
- ❸ EasySnap quick-mount system for fast and secure fitting.
- ❹ Special bag for storing the rolled-up box is included. (Thule Ranger 90)
- ❺ Extension areas with zippers to adjust the loading space to the size of the load. (Thule Ranger 500)
- ❻ Ski carriers for secure ski transport are included. (Thule Ranger 500)



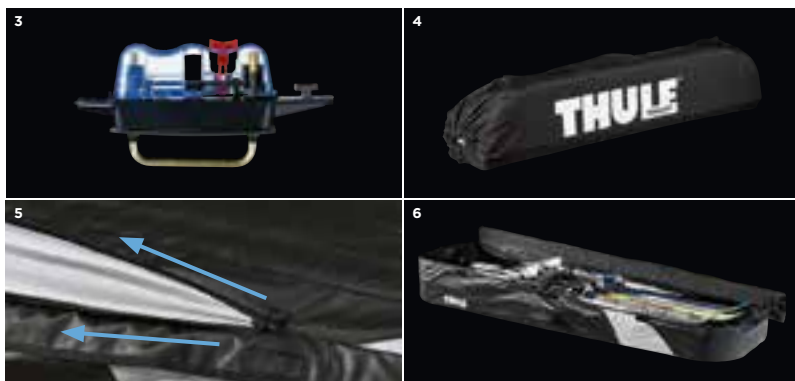
Easy to store

Thule Ranger 90 requires minimal storage space - you can even fit it in your wardrobe.



Carry it under your arm

A specially designed bag makes it very simple to carry the box wherever you want.



Roll it out

Just place it onto the load carrier, roll it out and mount. Ready to load!

› Carrier baskets





Thule Trail 823/824

The premium carrier basket.

FEATURES

- ❶ Exclusively designed in silver aluminium with black contrast elements.
- ❷ Integrated side consoles for greater security.
- ❸ Integrated T-tracks for seamlessly adding other Thule products. Extends basket use.
- ❹ Non-slip rubber padding for loading long objects.
- ❺ Lockable to load carrier.
- ❻ Points of attachment adjustable to the load carrier in length.



Thule Canyon 859

A robust, yet stylish, steel tube design carrier basket.

FEATURES

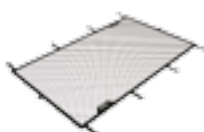
- ❶ Stylish and functional low-profile design, with tapered side walls for easier loading and unloading.
- ❷ Wind fairing is included to help airflow over your cargo.
- ❸ Make the cargo area 51 cm longer by adding the Thule Canyon Extension 8591.
- ❹ Stabilize your cargo and carry more gear by adding the Thule Canyon Crossbars 8592.
- ❺ Lockable with Thule One-Key System.

Add to your Thule Trail



Thule Load Net 8239/8249

Special loading net for Thule Trail carrier basket. Tailor sized with perfect fit to Thule Trail 823/824 basket.



Add to your Thule Canyon



Thule Canyon Extension 8591

Extends the cargo area by 51 cm in length.



Thule Canyon Crossbars 8592

Allows you to attach additional equipment or stabilize your cargo.

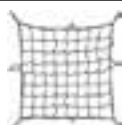


Add to your Thule carrier baskets



Thule Load Net 595/595-1

Helps to secure load on Thule carrier baskets. Expandable to adjust to load. Ten movable hooks for easy fixation onto Thule carrier basket. Size (cm): 80x80 (595) or 130x90 (595-1).



Thule Caravan 857

Spacious bag to organize loading in Thule carrier basket. Great loading capacity, about 250 litres. Fixed onto Thule carrier basket with integrated straps. Made out of weather resistant material and taped seams. Environmentally friendly PVC free construction. When not in use, simply fold and store in the included carrying bag. Size (cm): 101x81x45



› Rear mounted cargo



Thule EasyBase 949

The flexible four-in-one transport solution.

FEATURES

- 1 Expands with Thule EasyBase accessories for either bike transport (EasyBike), a hard-shell box (BackUp), a soft and waterproof bag (EasyBag) or a metal basket (EasyBasket).
- 2 Patented coupling fits all types of tow bars, and needs no adjustment.
- 3 U-bar easily folds down for easy storage.
- 4 Load capacity 45 kg.



Start with the Thule EasyBase – and tailor it to your needs.



Thule EasyBike 948-1/948-2
Easily fitted by hand straight onto Thule EasyBase – no tools required. For all sizes of bikes, can be combined to carry a maximum load of three bikes. Easy to load and keeps bikes firmly secured. 948-1 carries one bike. 948-2 carries two bikes.



Thule BackUp 900
Easily accessible and spacious transport solution for rear of car.



Thule EasyBasket 948-3
A convenient basket for carrying bulky, damp and dirty items on the Thule EasyBase.



Thule EasyBag 948-4
Easy accessible and foldable transport solution for rear of car.

Name	Thule EasyBase		Thule EasyBike		Thule BackUp	Thule EasyBasket	Thule EasyBag
	949		948-1	948-2	900	948-3	948-4
Size (cm)	120x60x78				147x57x70	126x56x11	110x55x53
Max. number of bikes			1	2			
Load capacity (kg)	45		17	2x17	50	60	
Weight (kg)	15		1.6	3.2	14	6	4
TÜV/EuroBE approved	•		•	•	•	•	•
Fulfils City Crash norms	•		•	•	•	•	•
Miscellaneous	Rear lights. Locks carrier to car with accessory 957.		By combining 948-1 and 948-2 it is possible to transport 3 bikes. Fits frame dimensions 20-70 mm. Fits all wheel dimensions. Locks bike to carrier with accessory 526.		Volume 420 l. Rear opening. Mounting system 80 mm U-bolt. Colour grey.		Volume 315 l. Straps included. Taped seams and sealed zipper with integrated lock.

Roof boxes



Name	Thule Excellence XT		Thule Dynamic		Thule Motion	
		M (800)	L (900)	Sport (600)	M (200)	
Size (cm)	218x94x40	206x84x34	235x94x35	190x67x42	175x86x46	
Volume (l) ¹	470	320	430	320	410	
Load capacity (kg)	75	75	75	75	75	
Mounting system	PowerClick		PowerClick		PowerClick	
Opening	DualSide		DualSide		DualSide	
Straps	3	3	3	3	3	
Central locking	•	•	•	•	•	
Fits Thule WingBar Edge	•	•	•	•	•	
Fits Thule WingBar	•	•	•	•	•	
Fits Thule SquareBar ²	•	•	•	•	•	
Fits Thule SlideBar	Accessory 697500	Accessory 697500	Accessory 697500	Accessory 697500	Accessory 697500	
TÜV/GS approved	•	•	•	•	•	
Fulfils City Crash norms	•	•	•	•	•	
Max pairs of skis or snowboards	6-8	5-7	6-8	4-6	5-7	
Max length skis (cm)	200	180	205	175	155	
Ski carrier	Accessory 694900	Accessory 694800	Accessory 694900	Accessory 694600	Accessory 694800	
Box lid cover	Included	Accessory 698100	Accessory 698300	Accessory 698200	Accessory 698100	
Colour	Exclusive 2-tone Black glossy - titan metallic/6119B Titan glossy - black glossy/6119T	Titan glossy/6128T Black glossy/6128B	Titan glossy/6129T Black glossy/6129B	Silver glossy/6206S Black glossy/6206B	Silver glossy/6202S Black glossy/6202B	

¹ Inner product measurements, based on digital 3D engineering drawings.

² Applies when using Thule's original carrier. Please consult your Thule dealer before using another manufacturer's carrier.

Foldable roof boxes



Name	Thule Ranger	
	90	500
Size (cm)	110x80x40	190x50x30
Volume (l) ¹	280	260
Load capacity (kg)	50	50
Mounting system	EasySnap	
Opening	Side/rear	Single side
Ski carrier	2	2
Straps	•	•
Locking	•	•
Fits Thule WingBar Edge	•	•
Fits Thule WingBar	•	•
Fits Thule SquareBar ²	•	•
Fits Thule SlideBar	Accessory 697100	Accessory 697100
TÜV/GS approved	•	•
Fulfils City Crash norms	•	•
Max pairs of skis or snowboards	-	3-4
Max length skis (cm)	-	185
Colour	Black - silver-grey/6011	Black - silver-grey/6035

¹ Inner product measurements, based on digital 3D engineering drawings.

² Applies when using Thule's original carrier. Please consult your Thule dealer before using another manufacturer's carrier.



Thule Motion			Thule Touring				
XL (800)	XXL (900)	Sport (600)	S (100)	M (200)	L (780)	Alpine (700)	
205x84x45	235x94x47	190x63x39	139x90x40	175x82x45	196x78x43	232x70x42	
460	630	300	330	400	420	430	
75	75	50	50	50	50	50	
PowerClick			FastClick				
DualSide		Single side	DualSide	DualSide	DualSide	DualSide	
3	3	3	3	3	3	3	
•	•	•	•	•	•	•	
•	•	•	•	•	•	•	
•	•	•	•	•	•	•	
•	•	•	•	•	•	•	
Accessory 697500	Accessory 697500	Accessory 697400	Accessory 697400	Accessory 697400	Accessory 697400	Accessory 697400	
•	•	•	•	•	•	•	
•	•	•	•	•	•	•	
5-7	6-8	4-6	-	5-7	5-7	4-6	
190	220	175	-	155	180	220	
Accessory 694800	Accessory 694900	Accessory 694600	-	Accessory 694800	Accessory 694800	Accessory 694700	
Accessory 698100	Accessory 698300	Accessory 698200	Accessory 698100	Accessory 698100	Accessory 698100	Accessory 698200	
Silver glossy/6208S Black glossy/6208B	Silver glossy/6209S Black glossy/6209B	Titan aeroskin/6346T Glossy Black/6346B	Titan aeroskin/6341T Glossy Black/6341B	Titan aeroskin/6342T Glossy Black/6342B	Titan aeroskin/6348T Glossy Black/6348B	Titan aeroskin/6347T Glossy Black/6347B	

Carrier baskets



New

Name	Thule Trail		Thule Canyon
	823	824	859
Size (cm)	135x90x18	160x100x18	127x104x15
Lock	•	•	
Fits Thule WingBar Edge	•	•	•
Fits Thule WingBar	•	•	•
Fits Thule SlideBar	•	•	•
Fits Thule SquareBar	•	•	•
TÜV/GS approved	•	•	•
Fulfills City Crash norms	•	•	•
Miscellaneous	Aluminum. Points of attachment adjustable to the load carrier in length.		Points of attachment adjustable to the load carrier in length.

› Bike







› Take your bike from start to finish.

Whether it's the thrill of racing downhill, the physical challenge of a long-distance race, or the peaceful relaxation of sightseeing that you long for, cycling is perhaps the ultimate way of experiencing the outdoors. On the way to your next ride our bike carriers will keep your bikes perfectly secured to your car. Let us worry about getting your bikes there - you worry about the ride.

The challenges shouldn't start until you get on your bike and start your ride!



Explanation of symbols



Maximum number of bikes possible to transport.



Bike carrier recommended for transport of E-bikes or other heavy bikes (max 30 kg).



ROOF MOUNTED BIKE CARRIERS, SEE PAGE 42

- ❶ Patented AcuTight clamping head “clicks” when optimal hold is reached controlling the torque going into the bike frame.
- ❷ Once the bike is placed in the carrier, it stays in position. That allows you to make all adjustments at convenient height without holding the bike.

REAR MOUNTED BIKE CARRIERS, SEE PAGE 46

- ❸ If your car doesn't have a tow bar and you need to transport many bikes, this is the perfect solution.
- ❹ Carries 2-4 bikes.
- ❺ Foldable and easy to store.

TOW BAR MOUNTED BIKE CARRIERS, SEE PAGE 50

- ❻ Always full access to the trunk, even with bikes mounted on carrier.
- ❼ New improved, detachable frame holders with Thule AcuTight torque limiter knobs that “click” when optimal torque is reached.

› Roof mounted carriers





Thule Sprint 569

The most complete fork mount carrier for maximum bike protection.

FEATURES

- 1 Patented AcuTight clamping head "clicks" when optimal hold is reached controlling the torque going into the bike frame.
- 2 The recommended roof option for transportation of bikes with sensitive frames (e.g. carbon)
- 3 Road Dampening Technology (RDT) elastomers are imbedded in the rack attachments to absorb road shock and vibrations.
- 4 Ratcheting wheel strap with RDT secures the rear wheel without damaging the rim.
- 5 Wheel chock supports for increased rear wheel security and stability.
- 6 Telescopic wheel tray for custom fit to bike and vehicle.
- 7 The maximum allowed weight per bike is 17 kg.
- 8 Lockable - bike to bike carrier, bike carrier to load carrier (locks included).
- 9 T-track adapters (20x20mm) are included for mounting on Thule WingBar Edge, Thule WingBar, Thule SlideBar, and Thule AeroBar.
- 10 Fulfills the City Crash norm.

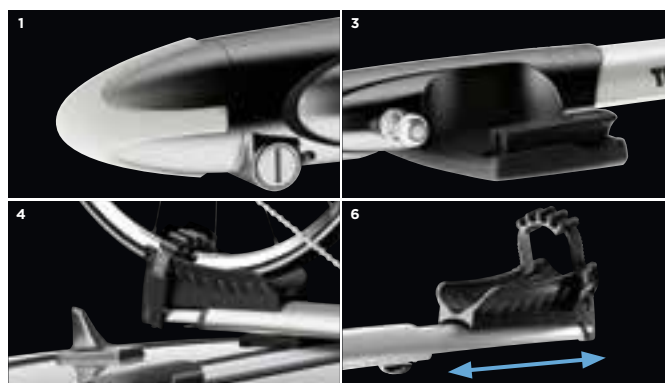


Add to your Thule Sprint



Thule wheel bag 563 XL

Specially designed, high-quality bag for the front wheel.





Thule ProRide 591

The best and most convenient roof mounted bike carrier on the market – for bikes up to 20 kg.

FEATURES

- ❶ The uniquely designed frame holder and the wheel tray automatically position the bike to the correct place allowing it to rest securely against the frame holder while securing it.
- ❷ The convenient height of the turning knob makes the final tightening quick and easy.
- ❸ The only roof mounted bike carrier on the market with a capacity to carry bikes up to 20 kg.
- ❹ Fits bike frames up to 100 mm (oval 80x100 mm, round 22-80 mm)
- ❺ Quick-release straps with wheel protection hold the wheels securely in place (adjustable for different wheel sizes).
- ❻ Can easily be fitted on either side of the car roof.
- ❼ This carrier is pre-assembled, no tools are required.
- ❽ Lockable – bike to bike carrier, bike carrier to load carrier (locks included).
- ❾ T-track adapters (20x20 mm) are included for mounting on Thule WingBar Edge, Thule WingBar, Thule SlideBar, and Thule AeroBar.
- ❿ Fulfills the City Crash norm.

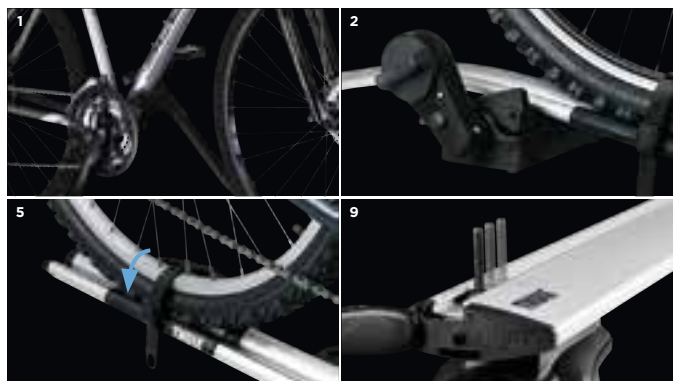


Add to your Thule ProRide



For extra security use the Thule cable lock 538

A plastic coated 180 cm long steel cable to secure your bike to the bike carrier for extra theft protection.



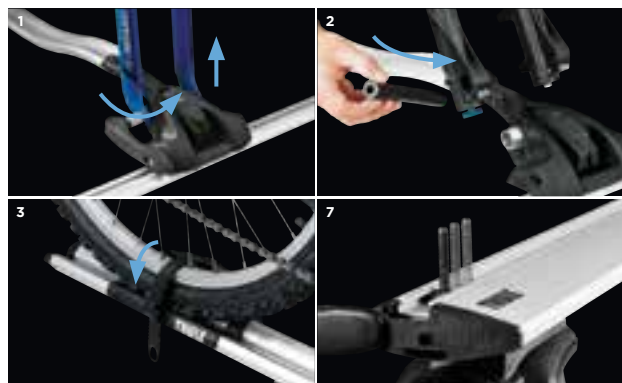


Thule OutRide 561

The sleek, light and convenient fork mount bike carrier for the professional look and feel.

FEATURES

- 1 Easily adjustable snap-on fastener for all types of forks.
- 2 Also for bikes equipped with disc brakes and 20 mm thru axles (adapter included).
- 3 Quick-release strap for rear wheel (adjustable for different wheel sizes).
- 4 The maximum allowed weight per bike is 17 kg.
- 5 This carrier is pre-assembled, no tools are required.
- 6 Lockable - bike to bike carrier, bike carrier to load carrier (locks included).
- 7 T-track adapters (20x20 mm) are included for mounting on Thule WingBar Edge, Thule WingBar, Thule SlideBar, and Thule AeroBar.
- 8 Fulfils the City Crash norm.

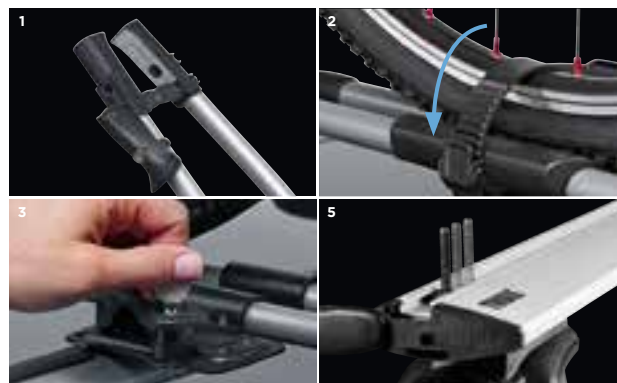


Thule FreeRide 532

The functional and easy to use bike carrier fulfilling all basic needs.

FEATURES

- 1 Frame holder with quick-lock, fits most frame sizes up to 80 mm.
- 2 Quick-release straps with wheel protection hold the wheels securely in place (adjustable for different wheel sizes).
- 3 Lockable - bike to bike carrier, bike carrier to load carrier (locks included).
- 4 The maximum allowed weight per bike is 17 kg.
- 5 T-track adapters (20x20 mm) are included for mounting on Thule WingBar Edge, Thule WingBar, Thule SlideBar, and Thule AeroBar.
- 6 Fulfils the City Crash norm.



➤ **Rear door
mounted carriers**





Thule RaceWay 991/992

The Thule RaceWay is our strongest, most secure and easiest to use rear mounted bike carrier.

FEATURES

- 1 Sure-Tight ratcheting cables provide maximum fastening security to your vehicle.
- 2 Patented FitDial guarantees a "perfect fit" to your vehicle.
- 3 Molded rubber pads provide firm hold to vehicle and protect against scratches.
- 4 Premium Cradles with RDT (Road Dampening Technology) secure the bike to the rack while absorbing road shock.
- 5 Patented No-sway cages prevent bike-to-bike and bike-to-vehicle contact.
- 6 Narrow cradle arms hold a variety of bike frames including smaller children's bikes and fold when not in use.
- 7 Lockable bike-to-carrier and carrier-to-vehicle (locks included).
- 8 Folds flat for easy transport and convenient storage.

This product does not have universal fit. Please use the Thule Buyer's Guide for information related to specific car models.

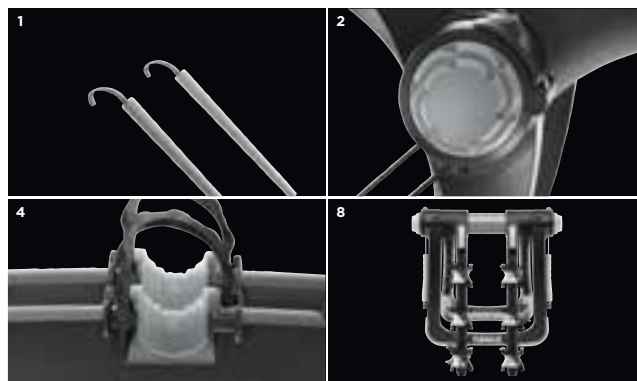


Add to your Thule RaceWay



Thule Bike Frame Adapter 982

Frame adapter for easiest possible fitting of bikes with non-standard frames, ladies' bikes, downhill bikes, etc.





Thule BackPac 973

The high standard carrier with great flexibility designed for vans, minibuses and MPVs (for 2-4 bikes).

FEATURES

- 1 Carries 2 bikes, 3 by adding Adapter 973-23 and 4 by adding Adapters 973-23 + 973-24.
- 2 The raised position of the carrier keeps the rear lights and number plate visible.
- 3 All parts in contact with the car and bikes are coated with rubber for extra protection.
- 4 All bike frame holders are detachable for convenient mounting of bikes.
- 5 Quick-release straps, adjustable for different wheel sizes.
- 6 Extendable wheel trays for large bikes.
- 7 Folds flat for easy storage and handling.
- 8 Outer bike position lockable to carrier, carrier lockable to car with Thule Lock 567.
- 9 A special kit adjusts the carrier to fit a number of vehicle models.

See the [Thule Buyer's Guide](#) or www.thule.com for car recommendation list.



Add to your Thule BackPac



Need to transport one or two extra bikes?

With the Thule adapter 973-23 the capacity of Thule BackPac increases from two to three bikes, and with adapter 973-24 from three to four bikes.



Thule ClipOn High 9105/9106

The fast mounting and foldable bike carrier designed for station wagons and hatchbacks (for 2 bikes).

FEATURES

- ❶ The raised position of the carrier keeps the rear lights and number plate visible.
- ❷ All parts in contact with the car and bikes are coated with rubber for extra protection.
- ❸ All bike frame holders are detachable for convenient mounting of bikes.
- ❹ Easy to mount to the rear door with a unique snap-on system.
- ❺ Quick-release straps, adjustable for different wheel sizes.
- ❻ Extendable wheel trays for large bikes.
- ❼ Quickly folds for easy storage.
- ❽ Outer bike position lockable to carrier.



See the Thule Buyer's Guide or www.thule.com for car recommendation list.

Thule ClipOn 9103/9104

The snap-on bike carrier with smart features, perfect for station wagons and hatchbacks (for 3 bikes).

FEATURES

- ❶ All parts in contact with the car and bikes are coated with rubber for extra protection.
- ❷ Easy to mount to the rear door with a unique snap-on system.
- ❸ Quickly folds for easy storage.
- ❹ Possible to attach Thule Light board 976.
- ❺ Use Thule Bike Frame Adapter 982 for fitting of bikes with non-standard frames (e.g. ladies' bikes, BMXs, downhill bikes).



See the Thule Buyer's Guide or www.thule.com for car recommendation list.

Thule FreeWay 968

The basic rear-door mounted three bike carrier designed for hatchbacks and sedans (for 3 bikes).

FEATURES

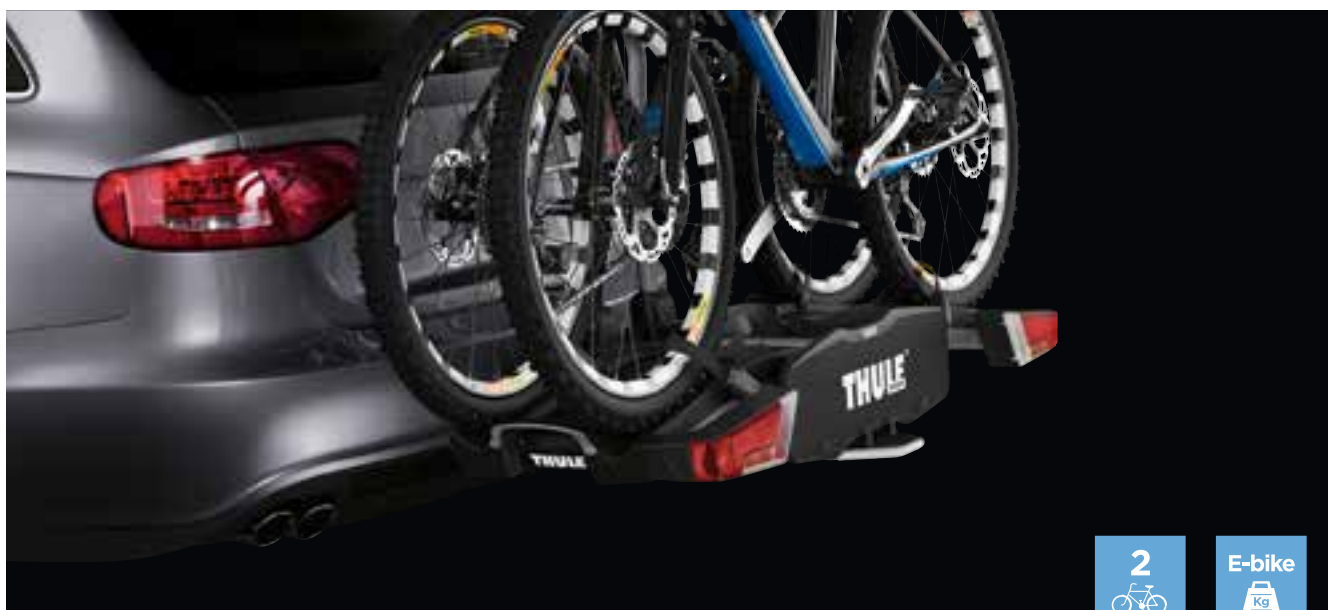
- ❶ All parts in contact with the car and bikes are coated with rubber for extra protection.
- ❷ Possible to attach Thule Light board 976.
- ❸ Use Thule Bike Frame Adapter 982 for fitting of bikes with non-standard frames (e.g. ladies' bikes, BMXs, downhill bikes).



See the Thule Buyer's Guide or www.thule.com for car recommendation list.

› Tow bar mounted carriers





Thule EasyFold 932

The most convenient, fully foldable two bike carrier for all types of bikes (even E-bikes/ Pedelecs – for 2 bikes).

FEATURES

- 1 New improved, detachable frame holders with Thule AcuTight torque limiter knobs that "click" when optimal torque is reached.
- 2 Fully foldable for convenient mounting, handling and storage.
- 3 High load capacity (2x30 kg) enabling transport fo E-bikes/Pedelecs.
- 4 Large distance between wheel holders enabling transport of sturdy bikes with large wheel bases.
- 5 Smart foot pedal tilt for easy trunk access even with bikes mounted.
- 6 Adjustable one hand coupling with low closing force for easy mounting of carrier.
- 7 Pump buckles with long wheel straps for easy fastening of wheels.
- 8 Integrated carrying handles for ergonomic transport of the carrier.
- 9 Carrier lockable on tow bar and all bike positions lockable to carrier (locks included).



Add to your Thule EasyFold



Thule EasyFold Carrying Bag 931-1

Protecting you and your car from dirt when transporting and storing the Thule EasyFold bike carrier.





Thule EuroClassic G6 928/929

The top of the range full size bike carrier with great flexibility and loading capacity. The Thule EuroClassic G6 is available in two versions – for two bikes or three bikes, both with the possibility to add an additional bike with an adapter.

FEATURES

- 1 New improved, detachable frame holders with Thule AcuTight torque limiter knobs that "click" when optimal torque is reached.
- 2 Loading capacity 25 kg per bike, enabling transport of lighter E-bikes/Pedelecs.
- 3 Increase load capacity by one bike by adding Thule Bike Adapter 928-1.
- 4 Large distance between wheel holders enabling transport of sturdy bikes with large wheel bases.
- 5 Wide tilt angle allows opening of even very large rear doors – even with bikes mounted.
- 6 Smart foot pedal tilt for easy trunk access even with bikes mounted.
- 7 Adjustable one hand coupling with low closing force for easy mounting of carrier.
- 8 Pump buckles with long wheel straps for easy fastening of wheels.
- 9 Carrier lockable on tow bar and all bike positions lockable to carrier (locks included).



Add to your Thule EuroClassic G6



Thule EuroClassic G5/G6 Bike Adapter 9281

Increase the capacity of your Thule EuroClassic G6 928/929 (and EuroClassic G5) carrier by one bike.





Thule VeloCompact 925/927

Thule's most compact and lightweight bike carrier, the Thule VeloCompact weighs only 14 kg thanks to its modern design and materials. Choose Thule VeloCompact 925 for two bikes and Thule VeloCompact 927 for three or four bikes.

FEATURES

- ❶ Easy mounting and adjustment of the carrier before closing the tightening handle thanks to the tow bar coupling's initial stability (Only 927)
- ❷ Possible to increase the load capacity to four bikes by adding a 4th bike adapter (Only 927)
- ❸ Easy mounting of bikes through detachable bike arms
- ❹ Carries bikes with large wheelbases thanks to extendable wheel holders.
- ❺ Simple to fold flat and store - fits most car trunks.
- ❻ Easy trunk access even with bikes mounted due to smart foot pedal tilt.
- ❼ Easy mounting of carrier - adjustable one hand coupling with low closing force.
- ❽ Simple to fasten wheels thanks to long wheel straps with pump buckles.
- ❾ Lock your bikes to the bike carrier - and your carrier to the tow bar (locks included).



automechanika
innovationaward

Add to your Thule VeloCompact



Thule VeloCompact 4th Bike Adapter 9261

Increase the capacity of your Thule VeloCompact 927 carrier by one bike. Fits only on the Thule VeloCompact 3 bike carriers (927).





Thule EuroRide 941/943

The Thule EuroRide is a functional bike carrier fulfilling all your basic needs. It has the same features as the other carriers, but in a simpler execution. Available in two versions: Thule EuroRide 941 for two bikes and Thule EuroRide 943 for three bikes.

FEATURES

- 1 Hand operated tilt for boot access even with bikes mounted.
- 2 Quick-mounting handle attaches carrier to tow ball with only a few turns.
- 3 Movable wheel holders with soft straps.
- 4 Stable frame holders for bike frames (up to 70 mm).
- 5 Carrier lockable on tow bar and bike positions lockable with accessory Thule Lockable Knob 526.



Add to your Thule EuroRide



Thule AcuTight Knob 528

A torque limiter accessory for rear mounted bike carriers with frame holders - replacing the standard knob.





Thule EuroPower 916

The robust and stable bike carrier especially developed for heavy and large bikes (e.g. E-bikes, big downhill mountain bikes – for 2 bikes).

FEATURES

- 1 New improved, detachable bike arms for convenient mounting of bikes.
- 2 High load capacity (2x30 kg) enabling transport fo E-bikes/Pedelecs.
- 3 Extra -large distance between wheel holders (25 cm) enabling transport of sturdy bikes with large wheel bases.
- 4 Smart foot pedal tilt for easy trunk access even with bikes mounted.
- 5 Adjustable one hand coupling with low closing force for easy mounting of carrier.
- 6 Pump buckles with long wheel straps for easy fastening of wheels.
- 7 Carrier lockable on tow bar and all bike positions lockable to carrier (locks included).

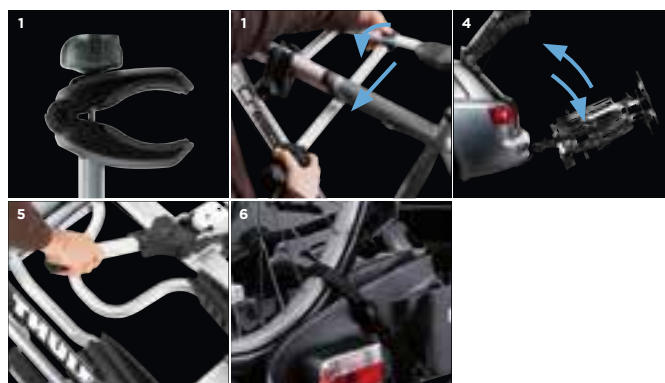


Add to your Thule EuroPower



Thule AcuTight Knob 528

A torque limiter accessory for rear mounted bike carriers with frame holders – replacing the standard knob.

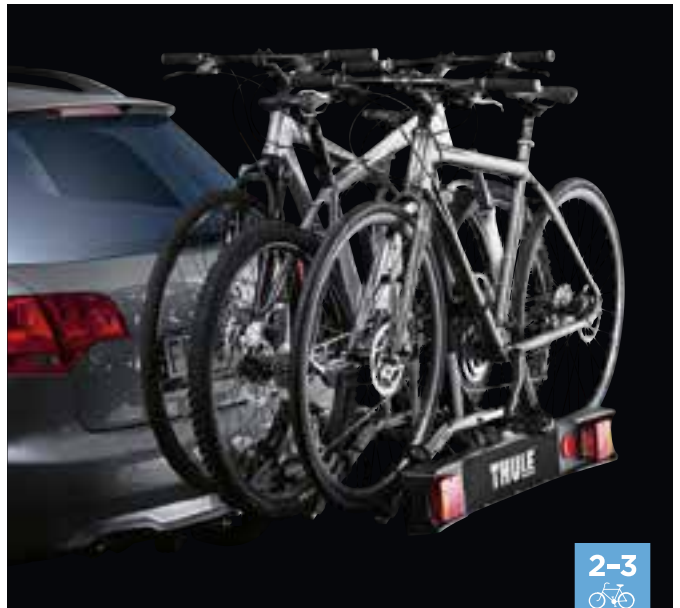


Thule RideOn

Our basic, tiltable bike carrier.

FEATURES

- 1 Hand operated tilt for boot access even with bikes mounted.
- 2 Smart coupling, fits most tow bars.
- 3 Bikes fixed in place with soft straps.



Thule HangOn

A basic and easy to use carrier if you need to transport 3-4 bikes. Available in two sizes - the 972 and 974 carry three bikes while the 9708 carries four bikes.

FEATURES

- 1 Strong coupling that needs no pre-adjustment for fixing.
- 2 Soft, protective frame holders keep the bikes in place.
- 3 Bikes are at convenient height from the ground.
- 4 Preassembled with strap and reflectors included for extra safety.
- 5 Folds flat for easy storage.
- 6 972/9708 tiltable for access to the trunk.
- 7 972/974 prepared for fitting light board 976 with adapter 9761 (not 9708).



Thule Xpress 970

The basic, quick and easy to use bike carrier (for 2 bikes).

FEATURES

- 1 Soft, protective frame holders keep the bikes in place.
- 2 Preassembled with strap, and reflectors included for extra safety.
- 3 Bikes are at convenient height from the ground.
- 4 Folds flat for easy storage and handling.
- 5 Use Thule Bike Frame Adapter 982 for fitting of bikes with non-standard frames (e.g. ladies' bikes, BMXs, downhill bikes).



> Bike Transport Cases



Thule RoundTrip Transition

This hard shell premium bike case with integrated bike work stand makes traveling with your bike simple.

FEATURES

- 1 The combination of ABS construction and the aluminum Click-Rail protects bike during transport.
- 2 Integrated bike stand doubles as a convenient bike holder and work stand.
- 3 Nylon wheel bags prevent frame and wheel contact.
- 4 Integrated wheels for easy transport.

Internal dimensions: 134x37.5x90.2 cm.
External dimensions: 137.2x39.4x94 cm.
Weight: 15.9 kg.



Thule RoundTrip Pro

Soft shell bike cases with integrated bike assembly stand makes traveling with your bike simple.

FEATURES

- 1 Rugged nylon shell expands around aluminum Click-Rail to protect bike during transport.
- 2 Durable and removable side panels protect the bike.
- 3 Nylon wheel bags prevent frame and wheel contact.
- 4 Thru axle adapters for 15 mm and 20 mm axles included.

Internal dimensions: 124.5x27.9x84.5 cm
External dimensions: 125.7x29.8x88.9 cm
Weight: 9.5 kg



Thule RoundTrip Traveler

This lightweight bike case combines a tough and durable exterior with an integrated mounting system that makes it an easy and secure way to travel with your bike.

FEATURES

- 1 Lightweight and easy to store with folding side panels and collapsible frame.
- 2 Durable ripstop nylon with internal padding to protect against wear and damage.
- 3 Tarpaulin interior is rugged and easy to clean.
- 4 Integrated wheels and multiple external handles make it easy to maneuver your bag while on the road.

Internal dimensions: 128x35x78 cm
External dimensions: 131x38x81 cm
Weight: 7.7 kg



Integrated bike assembly stand included with both Thule RoundTrip Transition and Thule RoundTrip Pro.



Add to your bike carrier



Thule EuroClassic G5/G6 Bike Adapter 9281

Increase the capacity of your Thule EuroClassic G6 928/929 (and Thule EuroClassic G5) carrier by one bike.



Thule VeloCompact 4th Bike Adapter 9261

Increase the capacity of your Thule VeloCompact 927 carrier by one bike. Fits only on the Thule VeloCompact 3 bike carriers (927).



Thule Bike Frame Adapter 982

Frame adapter for easiest possible fitting of bikes with non-standard frames (e.g. ladies' bikes, BMXs, downhill bikes).



Thule EasyFold Carrying Bag 931-1

Protecting you and your car from dirt when transporting and storing the Thule EasyFold bike carrier.



Thule Loading Ramp 9152

Convenient removable ramp for easy loading and unloading of your bikes.



Thule Wheel Adapter 9772

Protects the rim on mountain bikes and helps secure the wheels of road bikes.



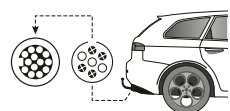
Thule Off-Road Adapter 9042

Adapter for fitting the Thule EuroClassic G6 (and Thule EuroClassic G5) to cars with exterior spare wheel.



Thule Number Plate 9762

A blank plate for fitting to the number plate holder of the bike carrier.



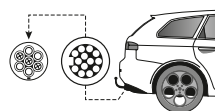
Thule Adapter 9906

Converts the car's 7-pin electrical outlet to a 13-pin.



Thule Light Board 976

Substitutes the most important rear lights on your car (7-pin connector).



Thule Adapter 9907

Converts the car's 13-pin electrical outlet to a 7-pin.



Thule Wheel Bag 563 XL
Specially designed, high-quality bag for the front wheel. Fits wheels up to 29".



Thule SlideBar 891-893
The Thule SlideBar makes loading of bikes on your car roof extremely easy, as the bar slides out on either side of the car. Please see page 14.



Thule 15 mm Thru-axle Adapter 561-1
An adapter for Thule OutRide 561 to enable transport of bikes with 15 mm thru axles.



Thule Front Wheel Carrier 545-2
Carrier for the front wheel with regular axle or wheels with disc brakes. Fits up to 29" wheels. Does not fit wheels with thru axles.



Thule Cable Lock 538
A plastic coated steel cable to secure your bike to the bike carrier for extra theft protection.



Thule AcuTight Knob 528
A torque limiter accessory for rear mounted bike carriers with frame holders – replacing the standard knob.



Thule One-Key System
Avoid the hassle with many different keys, upgrade to Thule One-Key System and get one key for all Thule products. Available in sets of 4, 6, 8 and 12 locks. Check www.thule.com for more information.



Thule Lock 957
For locking the Thule HangOn 972/974/9708, Thule RideOn 9502/9503 or Thule EasyBase 949 bike carriers to the tow bar.



Thule Knob lockable 526/527
Accessory for rear mounted bike carriers. Locks the frame holder. Art. no. 526 = 2 pack. Art. no. 527 = 4 pack.



Thule Bike Stacker 5781
Organize your bikes at home in a smart way.



Thule Wall Hanger 9771
For functional storage of bikes and bike carriers.

Bike carriers for roof mounting



Name	Thule Sprint	Thule OutRide	Thule ProRide	Thule FreeRide
	569	561	591	532
Max. number of bikes	1	1	1	1
Load capacity (kg)	17	17	20	17
Mounting of bike	Front fork/back wheel	Front fork/back wheel	Frame/wheel	Frame/wheel
Fits frame dimensions (mm)	All	All	∅ Up to 100*	∅ 22-70*
Fits wheel dimensions	All	All	All	All
Self-adjusting frame holder			•	
Adjustable quick-straps for wheels	•	•	•	•
Locks bike to carrier	•	•	•	•
Locks carrier to load carrier	•	•	•	•
Can be mounted on right or left side	•	•	•	•
Fits Thule WingBar, SlideBar and ProBar	•	•	•	•
Fits Thule SquareBar		•	•	•
Adapter for T-track (20x20 mm) ¹	Included	Included	Included	Included
Adapter for T-track (30x24 mm) ²	889-4	889-3	889-1	889-3
TÜV approved	•	•	•	•
Fulfills City Crash norms	•	•	•	•
Miscellaneous	Aluminium. Also for bikes with disc brakes. Does not fit bikes with thru axles. Only fits load carriers with t-tracks.	Aluminium. Also for bikes with disc brakes. Adapter for forks with 20 mm axles is included.	Aluminium. Very easy to mount. *Round frame 22-80 mm, oval frame 80x100 mm.	*Oval frame, max 65x80 mm.

¹ Fits Thule WingBar Edge, WingBar, SlideBar & AeroBar.

² Fits e.g. some BMW and Renault original roof racks.

Bike carriers for tow bar mounting



Name	Thule EasyFold	Thule EuroClassic G6		Thule VeloCompact		Thule EuroRide	
	932	928	929	925	927	941	943
Max. number of bikes	2	2 (3 with adapter 928-1)	3 (4 with adapter 928-1)	2	3 (4 with adapter 9261)	2	3
Load capacity (kg)	60	51	60	46	60	36	45
Max bike weight (kg)	30	25	25	25	25	20	20
Wheel distance (cm)	22	22	19	19	19	17	17
Size (cm)	123x61 (31x61x68 when folded)	137x48	137x65	103x59	103x72	105x58	105x75
Weight (kg)	16.9	17.6	20.7	14.1	18.9	14.1	17.9
Fits frame dimensions (mm)	22-80	22-80	22-80	22-80	22-80	20-70	
Wheel mounting on adjustable holders	Pump buckles	Pump buckles	Pump buckles	Pump buckles	Pump buckles	Adjustable straps	Adjustable straps
Detachable frame holders	•	•	•	•	•		
Locks bike to carrier	•	•	•	•	•	Accessory 526/527/528	
Locks carrier to car	•	•	•	•	•	•	•
Tilt function, with bikes	Foot pedal	Foot pedal	Foot pedal	Foot pedal	Foot pedal	Hand operated	
Usable with loading ramp 9152	•	•	•	•	•		
Fits cars with exterior spare tyre		With spare wheel adapter 9042		With spare wheel adapter 9241			
Rear lights	•	•	•	•	•	•	•
Powerplug	7-pin (13-pin with adapter 9907)	13-pin (7-pin with adapter 9906)		7-pin (13-pin with adapter 9907)		7-pin (13-pin with adapter 9907)	
TÜV/EuroBe approved		•	•				
Fulfills City Crash norms	•	•	•	•	•	•	•
Miscellaneous		Max bike weight for adapter 928-1 is 15 kg.		Max bike weight for adapter 926-1 is 15 kg.			

Bike carriers for rear door mounting



Name	Thule RaceWay		Thule BackPac	Thule ClipOn High		Thule ClipOn		Thule FreeWay
	991	992	973	9105	9106	9103	9104	968
Max. number of bikes	2	3	2 (3 with adapter 973-23, 4 with 973-23 + 973-24)	2	2	3	3	3
Load capacity (kg)	30	45	60	30	30	45	45	45
Weight (kg)	9.8	10.6	14	10	12.9	6.1	7.1	5.1
Mounting of carrier	Steel ratcheting cables		With BackPac kit	Snap-on mounting system		Snap-on mounting system		Adjustable straps
Fits frame dimensions (mm)	All		22-80	22-80		All		All
Fits wheel dimensions	All		All	All		All		All
Rubber coated frame holder	•	•	•	•	•	•	•	•
Detachable frame holders			•	•	•			
Wheel mounting on adjustable holders			Quick release straps	Quick release straps				
Locks bike to carrier	•	•	•	•	•	Accessory 538		Accessory 538
Locks carrier to car	•	•	Accessory 567					
Boot access with carrier mounted	•	•	•	•	•	•	•	•
Miscellaneous	Preassembled. Sturdy strap for fixation of bikes included.		Placement that does not cover the rear lights or number plate.	Placement that does not cover the rear lights or number plate.		Easily mounted with tightening flexibility. Sturdy strap for fixation of bikes included.		Sturdy strap for fixation of bikes included. Also fits sedans.

See the Thule Buyer's Guide or www.thule.com for details regarding fit to different car models.



Thule EuroPower	Thule RideOn		Thule HangOn			Thule Xpress
916	9502	9503	972	9708	974	970
2	2	3	3	4	3	2
60	30	45	45	60	45	30
30	17	17	15	15	15	15
25	19	19				
118x63	105x55	105x75	47x54	47x64	47x54	43x34
18.9	9.5	12	7.2	10.3	7.2	4.3
22-80	All	All	All	All	All	All
Pump buckles	Adjustable straps	Adjustable straps				
•						
•	Accessory 538		Accessory 538			Accessory 538
•	Accessory 957		Accessory 957			With padlock
Foot pedal	Hand operated		Hand operated			
•						
With spare wheel adapter 9042						
•	•	•	Accessory 976			Accessory 976
7-pin (13-pin with adapter 9907)	7-pin (13-pin with adapter 9907)					
•	•	•	•	•	•	•
Fits wheels with up to 2.2" width			Adapter 9761 needed for fitting lightboard 976 on 972 and 974.			Straps for fixation of bikes included.

› Water



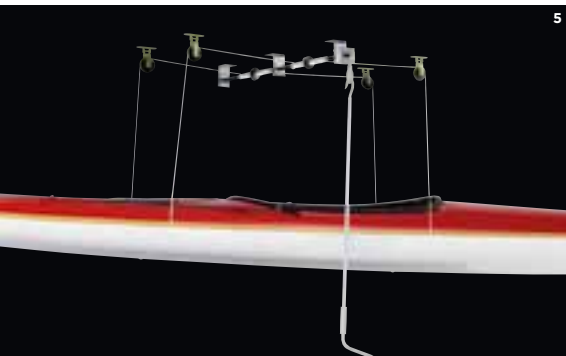




› To the water and beyond.

We humans have thought up numerous ways to master water, and kayaks, canoes, surfboards, and wakeboards might be the most exciting. At Thule we've made it our mission to get your gear to the water, by developing ultra-safe racks that are easy to mount, space-saving and equipped with powerful straps and protective pads. We'll get you to the water safe and sound. Then it's your choice if you want to go with the flow or against the tide.





FEATURES

- ❶ Tiltable in a wide angle for easiest possible loading and unloading of your kayak.
- ❷ Exclusive telescopic design, with integrated strap.
- ❸ Hook the Thule Quick Draw to your car and boat, give it a yank, and get going. Sold in sets of two. Perfect for use as a bow and stern line.
- ❹ The innovative lockable strap prevents theft of your kayak or other equipment you strap on to your roof rack.
- ❺ With the Thule MultiLift 572, you can easily lift up your roofbox to the garage ceiling. The lift works just as perfectly for kayaks and surfboards.
- ❻ Thule multi-purpose carrier 855 carries up to three oars, paddles, etc.



Thule Hullavator Pro 898

Get out on the water quickly and easily – even on your own. This lift-assist carrier for kayaks handles up to 18 kg of the weight for you.

FEATURES

- ❶ Load and unload your kayak on your own thanks to the gas-assist struts that lift and lower 18 kg of the kayak's weight.
- ❷ Load/unload and strap your kayak at waist height with the help of double extending arms that lower the kayak by up to 1 meter.
- ❸ Maximum protection for your kayak thanks to 8 touch points of padded support.
- ❹ Longer product life from the aluminum, double-coated steel construction that resists corrosion.
- ❺ Each carrier carries 1 kayak.
- ❻ Fit up to 2 carriers per vehicle.
- ❼ Includes Thule QuickDraw bow and stern tie-downs for transporting 1 kayak.
- ❽ Suits kayaks up to 80 cm wide and 35 kg.
- ❾ Fits the Thule ProBar load racks only (to ensure enough clearance from your car during loading/unloading).

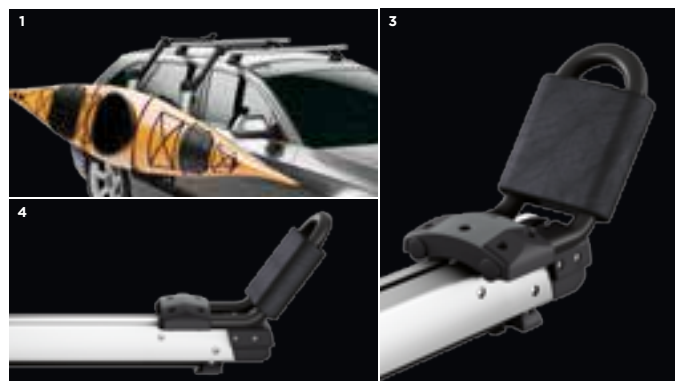


Add to your Thule Hullavator Pro



Thule ProBar 39X

The load bar with a unique tri-slot design for fitting of multiple accessories. Use the Thule ProBar with the Thule Hullavator Pro to ensure side of car clearance during loading/unloading.





Thule K-Guard 840

Faster, safer, easier – spend less time loading and unloading and more time in your kayak.

FEATURES

- 1 Very quick and easy to fit to the roof rack.
- 2 Tilttable in a wide angle for easiest possible loading and unloading of the kayak.
- 3 The rubber supports are designed for adapting to differently shaped kayaks, maintaining a good pressure distribution onto the kayak hull.
- 4 The first-ever kayak carrier to be lockable both kayak to carrier (with lockable steel-core strap), and carrier to roof rack.
- 5 A rubber pad around the strap buckle protects the kayak and car from scratches during loading and transport.
- 6 Elegant aluminium cradles.
- 7 The rubber supports are designed for adapting to differently shaped kayaks, maintaining good pressure distribution onto the kayak hull.



Thule Hull-a-Port Pro 837

The tilttable version of our most stable and space-saving kayak carrier.

FEATURES

- 1 Folds down to the level of the load carrier when not in use, for improved aerodynamics.
- 2 Stable, space-saving design thanks to the angled shape of the carrier.
- 3 Wide mouth J-profile offers easier loading and unloading.
- 4 Pads with thick felt layer to protect the hull of the kayak.
- 5 Powerful straps keep the kayak firmly secured.
- 6 A rubber pad around the strap buckle protects the kayak and car from scratches during loading and transport.



Thule Hull-a-Port 835-1

This standard J-style cradle delivers superior carrying performance and protection with its 4-touchpoint adjustable padding and steel design.

FEATURES

- 1 Stable, space-saving design thanks to the angled shape of the carrier.
- 2 Wide mouth J-profile offers easier loading and unloading.
- 3 Pads with thick felt layer to protect the hull of the kayak.
- 4 Powerful straps keep the kayak firmly secured.
- 5 A rubber pad around the strap buckle protects the kayak and car from scratches during loading and transport.



Thule Hydroglide 873

A smart kayak carrier with built-in load assist.

FEATURES

- 1 Felt-lined rear support for easy loading. Simply slide the kayak up onto the car roof.
- 2 Four adjustable rubber pads keep the kayak stable and secure during transport.
- 3 Powerful straps keep the kayak firmly secured.
- 4 A rubber pad around the strap buckle protects the kayak and car from scratches during loading and transport.
- 5 Easy to mount on Thule SquareBars and bars with T-track (T-track adapter included).



Thule Kayak Carrier 874

A functional kayak carrier that adapts perfectly to the hull of the kayak.

FEATURES

- 1 Four adjustable rubber pads keep the kayak stable and secure during transport.
- 2 Powerful straps keep the kayak firmly secured.
- 3 A rubber pad around the strap buckle protects the kayak and car from scratches during loading and transport.
- 4 Easy to mount on Thule SquareBars and bars with T-track (T-track adapter included).



Thule Kayak Support 520-1

Basic space saving carrier for transport of all types of kayak.

FEATURES

- 1 The kayak stackers can be folded flat when not in use.
- 2 Sturdy straps keep the kayak firmly secured.
- 3 A rubber pad around the strap buckle protects the kayak and car from scratches during loading and transport.



Thule Portage 819

Carry your canoe or kayak safely and securely, and spend maximum time out on the water with our easiest-loading canoe carrier.

FEATURES

- 1 Easy to load thanks to durable gunwales with ramped sides.
- 2 Secure your canoe quickly and easily with the ratcheting QuickDraw tie-downs with carabiner.
- 3 Protect your car and canoe from scratches thanks to the strong, durable load straps with buckle bumper.
- 4 Protect your canoe during transit with the cushioned weather-resistant base padding.
- 5 Fits all Thule Rack Systems and most roof racks in the market thanks to the universal FlipFit brackets (t-track compatible with accessory Thule T-track Adapter 882).

Thule SUP Taxi 810

Premium Stand-Up Paddleboard (SUP) carrier with universal and safe mounting design.

FEATURES

- 1 Exclusive, telescoping design delivers a custom fit for board widths 70-86 cm.
- 2 Heavy-duty, steel reinforced webbing and spring loaded locking cam provide unsurpassed security for your boards.
- 3 Integrated fixation strap for easy and convenient loading.
- 4 Soft, weather resistant padding protects boards during transit.
- 5 Equipped with Speed-Link mounting system for convenient, tool-free mounting to the roof rack.
- 6 4 Thule One-Key System locks (included), 2 for locking strap assembly and 2 for Speed-Link.

Thule Board Shuttle 811

Take your board with you wherever you go. This custom-width board carrier with built-in board protection fits almost all roof racks.

FEATURES

- 1 A snug, custom fit for your board thanks to the telescoping design, for board widths 70-86 cm.
- 2 Transport two boards with maximum stability with the dual loading design.
- 3 Secure your board to your vehicle with the bow tie-down.
- 4 Protect your board during transit with the cushioned weather-resistant base padding.
- 5 Protect your car and board from scratches thanks to the strong, durable load straps with buckle bumper.
- 6 Fits all Thule Rack Systems and most roof racks in the market thanks to the universal FlipFit brackets (t-track compatible with accessory Thule T-track Adapter 882).

Water sport carriers



Name	Thule Hullavator Pro 898	Thule K-Guard 840	Thule Hull-a-Port Pro 837	Thule Hull-a-Port 835-1	Thule Hydroglide 873	Thule Kayak Carrier 874
Main load type	Kayak	Kayak	Kayak	Kayak	Kayak	Kayak
Load capacity	1 kayak (max 35 kg)	1 kayak (max 45 kg)	1 kayak (max 45 kg)	1 kayak (max 45 kg)	1 kayak (max 25 kg)	1 kayak (max 25 kg)
Length of strap (cm)	2x440	2x400	2x275	2x275	2x400	2x400
Rubber protection for buckle	•	•	•	•	•	•
Fits all mast dimensions						
Fits other crafts		Surfboard or small boat			Surfboard or small boat	Surfboard or small boat
Lock	•	•	Accessory 841 or 538	Accessory 841 or 538	Accessory 841 or 538	Accessory 841 or 538
Fits Thule WingBar, SlideBar & ProBar	Only Thule ProBar	•	• ¹	• ¹	•	•
Fits Thule SquareBar		•	•	•	•	•
Fulfills City Crash norms	•	•	•	•	•	•

¹ Fits around the bars and in T-track slot for Thule SlideBar with adapter 881.

² Fits around the bars, not compatible with Thule SlideBar.

³ Fits in T-track slot for Thule WingBar, Thule SlideBar and Thule ProBar with adapter 882.



Thule Wave Surf Carrier 832

The easiest way to transport up to two surfboards.

FEATURES

- ❶ The board sits in a soft, protected rubber cradle.
- ❷ Carries up to two boards.
- ❸ A rubber pad around the strap buckle protects the kayak and car from scratches during loading and transport.

Thule Sailboard Carrier 533/833

Classic Thule product used by windsurfers and surfers around the world.

FEATURES

- ❶ Carries up to two boards and two masts.
- ❷ Protective pads are included with this product.
- ❸ Powerful straps keep the kayak firmly secured.
- ❹ 533 for use with Thule SquareBar and 833 for use with Thule WingBar Edge, Thule WingBar, Thule SlideBar, and Thule ProBar.

Add to your Water sport carrier



Thule WaterSlide 839

A technical mat that protects your vehicle while loading and unloading your Kayak/Canoe.



Thule Lockable Strap 841

The innovative lockable strap prevents theft of your kayak or other equipment you strap on to your roof rack.



Thule QuickDraw 838

Perfect to use as a bow and stern line.



Thule Windsurfing Pads 5603

For cushioned support of your watersport craft during transport.



Thule Eye Bolt 320

Secure your load in the T-track of your roof rack.



Thule Kayak Support 520-1	Thule Portage 819	Thule Sup Taxi 810	Thule Board Shuttle 811	Thule Wave Surf Carrier 832	Thule Sailboard carrier	
					533	833
Kayak	Canoe	SUP/Surf board	SUP/Surf board	Surf board	Sailboard and mast	
2 kayaks (max 50 kg)	1 canoe (max 45 kg)	2 boards (max 25 kg)	2 boards (max 50 kg)	2 surf boards (max 25 kg)	2 sailboards (max 25 kg) + 2 masts (max 6 kg)	
2x275	2x440		2x440	2x180	2x275	2x275
	•		•	•	•	•
					•	•
Surfboard or small boat	Small boat	Fits all types of boards	Fits all types of boards		Surfboards	
Accessory 841	Accessory 841 or 538	•	Accessory 841 or 538	Accessory 841 or 538	Accessory 841 or 538	
•	• ³	• ²	• ³	•		•
•	•	•	•	•	•	
•	•	•	•	•	•	•

› Winter







› Snow adventures in style.

Skiing is in a class of its own among outdoor activities. We try to match that by making ski- and snowboard carriers that really stand out among the competition. All Thule ski carriers are easy to mount, load and unload, whatever the weather. In addition they are elevated to prevent roof damage, and extendable for making those last minute additions. In our winter range you'll also find our snow chains. Getting to the white open spaces is no trouble - even if it's all downhill from there.





FEATURES

- ❶ Thule Easy-fit is the award-winning family of snow chains developed for passenger cars and SUVs. Combines the most innovative technology with cutting edge design.
- ❷ With a simple hand action, the ski carrier conveniently slides out so that you can load and unload your skis without having to stretch over the car roof.
- ❸ The Thule K-Summit family contains the most exclusive external snow chains, all of which are exceptionally user-friendly. Equipped with one-hand ratchet system allowing effortless fitting.
- ❹ Extra large push buttons make it easy to open the ski carrier, even with gloves on.
- ❺ Lock your skis to the ski carrier – and your ski carrier to the load carrier.

› Winter sports carriers





Thule SkiClick 7291

Smart, space saving ski transporter.

FEATURES

- 1 For safe, transport of cross-country skis.
- 2 Innovative 3-in-one solution, a ski carrier with ski strap and wall storage functionality.
- 3 Smart, space-saving design.
- 4 Minimum wind drag for less fuel consumption.
- 5 Secure correct mounting and protect against theft of skis.
- 6 Attaches to walls and roof racks with a simple click.
- 7 Fits all Thule bar load carriers.

Add to your Thule SkiClick



Thule SkiClick Full Size Bag 7295

Slim ski bag that protect your skis. Designed with double zippers to fit together with Thule SkiClick. Easy to carry with adjustable shoulder strap. Thin material packs up tight when not used.



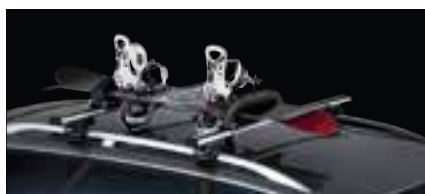
Thule Deluxe 726/727/740

A high class ski carrier with aerodynamic design, for up to 6 pairs of skis.

FEATURES

- 1 Height adjustable to keep high bindings from damaging the car roof.
- 2 Extra large push buttons make it easy to open the ski carrier with gloves on.
- 3 Soft rubber pads to protect your skis during transport.
- 4 Exclusive, aerodynamic design in aluminium.
- 5 60 cm loading space that holds up to six pairs of skis or four snowboards.
- 6 One-Key System compatible. With this accessory you can replace the locking cylinders to use one and the same key for all your Thule products.

NOTE: THULE DELUXE 727 DOES NOT FIT THULE WINGBAR EDGE 9581/9581B, 9582/9582B, 9584/9584B, 9591/9591B, 9594/9594B



Thule Snowpro 745/746/748

Tried and tested by thousands of skiers around the world.

FEATURES 745/746

- 1 Available in three sizes for three to four pairs of skis or two snowboards.

FEATURES 748

- 1 Holds up to four pairs of skis or two snowboards.
- 2 The carrier can be raised 30 mm for transporting skis with high bindings.



Thule Xtender 739

So smart that it even helps you to load your skis.

FEATURES

- 1 With a simple hand action the carrier slides out for ease of loading and unloading.
- 2 Raised design to keep high bindings from damaging the car roof.
- 3 Extendable for easy loading and unloading, without having to stretch over the car roof.
- 4 Extra large push buttons make it easy to open the ski carrier with gloves on.
- 5 Exclusive, aerodynamic design in aluminium.
- 6 60 cm loading space that holds up to six pairs of skis or four snowboards.
- 7 Soft rubber pads to protect your skis during transport.
- 8 One-Key System compatible. With this accessory you can replace the locking cylinders to use one and the same key for all your Thule products.

NOTE: THULE XTENDER 739 DOES NOT FIT THULE WINGBAR EDGE 9581/9581B, 9584/9584B

› Snow chains



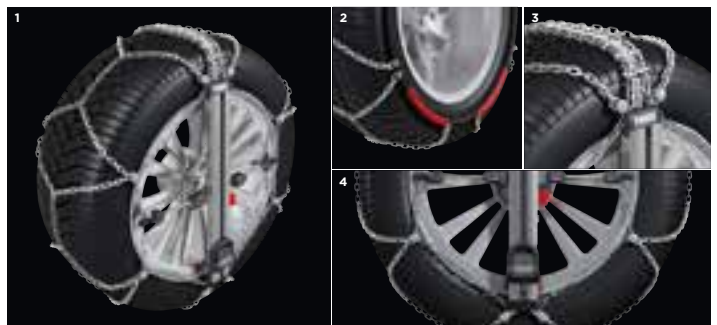


Thule Easy-fit family

In 12 seconds the innovative Thule Easy-fit will be mounted on the wheel, making it the fastest to fit snow chain ever and a Guinness World Record holder. Now also available in new version for SUV (Thule Easy-fit SUV) and in high performance version for passenger cars (Thule Easy-fit CU-10).

FEATURES

- ❶ The central aluminium bar is the core of the tightening system: open the integrated pedal and push with the foot to activate the automatic tensioning. The chain will be tightened automatically at first car motion.
- ❷ The internal rigid arch system allows a very intuitive fitting from the upper part of the wheel.
- ❸ Welded S-shaped steel plates connecting the aluminum bar with the internal rigid arch system.
- ❹ Automatic release - pull the safety device, push the red buttons on the aluminum bar and the chain is released.
- ❺ The fitting is very intuitive and is done from the top to the bottom of the wheel.
- ❻ Practical and resistant bag with high visibility instructions, usable as kneel-mat during fitting and removing.



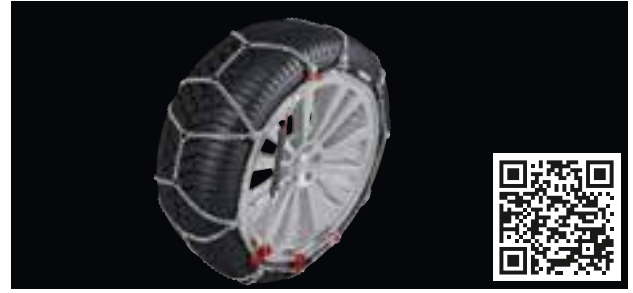


Thule K-Summit

The smartest external chain for passenger cars.

FEATURES

- ❶ 0 mm clearance behind the wheel.
- ❷ Fitted on the original nut/bolt of the wheel.
- ❸ Innovative ratched system which permits effortless fitting.
- ❹ Tensioning springs decrease dynamic elevation and enable perfect fitting on several tyre sizes.
- ❺ Tread chain with alternation of special injection-moulded plastic plates with hard metal studs and special alloyed steel chain.
- ❻ No contact with alloy rims.
- ❼ Foldable arms for easy storage in a smart bag.
- ❽ Innovative design.
- ❾ Also available: Thule K-Summit XL and Thule K-Summit XXL for small and big SUVs.



Thule CK-7

The thinnest snow chain in the world.

FEATURES

- ❶ 7 mm inside and on-the-tread clearance.
- ❷ Bottom to top fitting thanks to the internal flexible cable.
- ❸ Special twisted links, chain thickness reduced to 7 mm.
- ❹ Superior driving comfort.
- ❺ Micro-regulation system for perfect tensioning.
- ❻ Closed shortening hooks avoid coils on the chain.
- ❼ Alloy wheels protectors (optional application).
- ❽ Colour-coded assembling points.



Thule CS-10

The smart snow chain with automatic release.

FEATURES

- ❶ 10 mm inside clearance.
- ❷ External quick release system: remove the snow chain by pulling the special device.
- ❸ Self-tensioning system: just one stop to fit the chain.
- ❹ Micro-regulation system for a perfect tensioning.
- ❺ Alloy wheels protectors (optional application).
- ❻ Also available for SUVs and RVs.



Thule CL-10

Ice-breaker reinforcements and automatic tensioning.

FEATURES

- ❶ 10 mm inside clearance.
- ❷ Self-tensioning system: just one stop to fit the chain.
- ❸ Asymmetrical diamond pattern chain with ice-breaker reinforcements.
- ❹ Micro-regulation system for a perfect tensioning.
- ❺ Alloy wheels protectors (optional application).
- ❻ Also available for SUVs and VANS.



Thule CB-12

Simplicity and sturdiness.

FEATURES

- ❶ 12 mm inside and on-the-tread clearance.
- ❷ Manual tensioning system: one stop to fit the chain and one to tighten it.
- ❸ Closed shortening hooks avoid coils on the chain.
- ❹ Also available for SUVs, RVs and VANS.

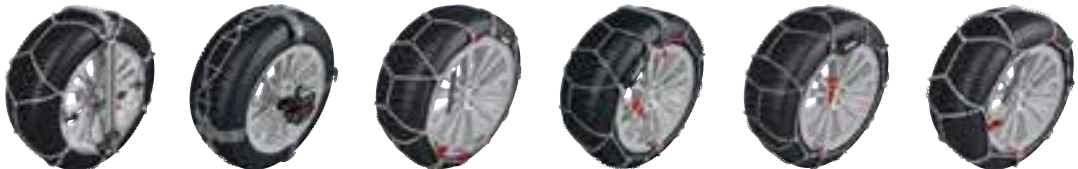
Winter sport carriers



Name	Thule SkiClick	Thule Xtender	Thule Deluxe			Thule Snowpro		Thule Snowpro Uplifted
	7291	739	740	726	727	745	746	748
Loading width (cm)		60	30	40	60	30	40	40
Max pairs of skis or snowboards	1*/0	6/4	3/2	4/2	6/4	3/2	4/2	4/2
Extra large push-button		•	•	•	•			
Wide rubber protectors		•	•	•	•	•	•	•
Room for high bindings		•	•	•	•			•
Locks skis to carrier	Safety lock	•	•	•	•	•	•	•
Locks carrier to load carrier		•	•	•	•	•	•	•
Fits Thule Wingbar, Slide and AeroBar	•	•	•	•	•	With adapter 888	With adapter 888	With adapter 887
Fits Thule SquareBar	•	•	•	•	•	•	•	•
TÜV approved		•	•	•	•	•	•	•
Miscellaneous	Smart ski carrier for convenient transport and storage of cross country skis. Thule SkiClick Bag 7294 (short) and 7295 (long).	Aluminium. Extendable for easier loading and unloading.	Aluminium. 25 mm raise adapter included. Cannot be raised when mounted on aero bars.					Raised 30 mm, making room for higher bindings.

* Only for cross country ski.
 739: Not suitable with WingBar Edge: 9581/9581B, 9584/9584B.
 727: Not suitable with WingBar Edge: 9581/9581B, 9582/9582B, 9584/9584B, 9591/9591B, 9594/9594B.

Snow chains



Name	Thule Easy-fit family	Thule K-Summit family	Thule CK-7	Thule CS, XS models	Thule CL, CG, XG models	Thule CB, CD, XB, XD models
Intuitive fitting	•					
External Fitting		•				
Conventional fitting			•	•	•	•
External release	•	•		•		
Self-tensioning system (one stop for fitting)	•			•	•	
Manual tensioning (2 stops for fitting)			•			•
Alloy wheel protection	•	•	•	•	•	Only for CD and XD models
ABS-ESP compatible	•	•	•	•	•	•



Awards for Thule CS-10.

Awards for Thule CL-10.

› The world of Thule.

We are pretty sure that you are eager to load your gear and get out there. Before, or when you come back, take another look at the world of Thule. Our wide range of products, such as racks, snow chains, bags, cargo and towing solutions, as well as carriers for bikes, winter and water sports and for professional use are available at our website.

WWW.THULE.COM

Get to know our products, use the handy Buyer's Guide and find our dealers. The Buyer's Guide is available on our mobile site, www.m.thule.com



Thule Buyer's Guide

When you have found the right loading solution, you also need to adapt it to your vehicle. One of the main functions on thule.com is the Buyer's Guide. Step by step, it will help you to find out which products fit your type of car.



» PART OF THULE GROUP

THULE PARTNER PROGRAMME

Thule has a large number of dealers all over the world and some selected stores are part of the Thule Partner Programme. These stores offer our complete range of products and the personnel are specially educated in all of our solutions. Use our Dealer Locator to find the suitable dealer for your needs in your area.

THULE IN SOCIAL MEDIA

The full experience of Thule is completed through our other media channels. Visit us at Facebook or be inspired at our YouTube channel, which among other things contains a number of product films.

www.facebook.com/thulebringyourlife
www.youtube.com/thulebringyourlife

THULE GROUP

Thule is a part of Thule Group, a collection of international brands that have one common mission: developing smart ways to simplify your active life.

www.thulegroup.com



5211400020 English Local variations in product range may occur and products may be subject to change without further notice. With reservation against possible mistakes in the contents of the catalogue.
Production: Guts&Glory, Photo: Marcel Pabst, Mücke Strimmed.
Copyright 2015 Thule Sweden AB.



Thule Sweden AB

Box 69, SE-330 33 Hillerstorp, Sweden.

Tel +46 370-255 00, Fax +46 370-229 08.

www.thule.com